



RAMPHASTOS



Fundación Agroecológica Iguazú.



SUA NASUA



ILEX PARAGUAIENSIS



“The creation of diverse, regenerative cultures cooperatively united in a regenerative civilization is the only viable future open to us as we move into the planetary era.”

-Daniel Christian Wahl



FAI 2022 Results

Here you will find answers to the following questions:

- 1- Who are we? FAI's Why? How? What?
- 2- 2022 General Results: Data & Milestones (January-December)
- 3- Our Mandala Team.
- 4- Why FAI Results
- 5- Next Steps

1. We are **Fundación Agrocológica Iguazú (FAI)**

Why?

Stewarding the spirit of the yerba mate, a gift received from the guarani people source of wisdom, discovery, awe & magic providing constant inspiration and caring for mother nature.

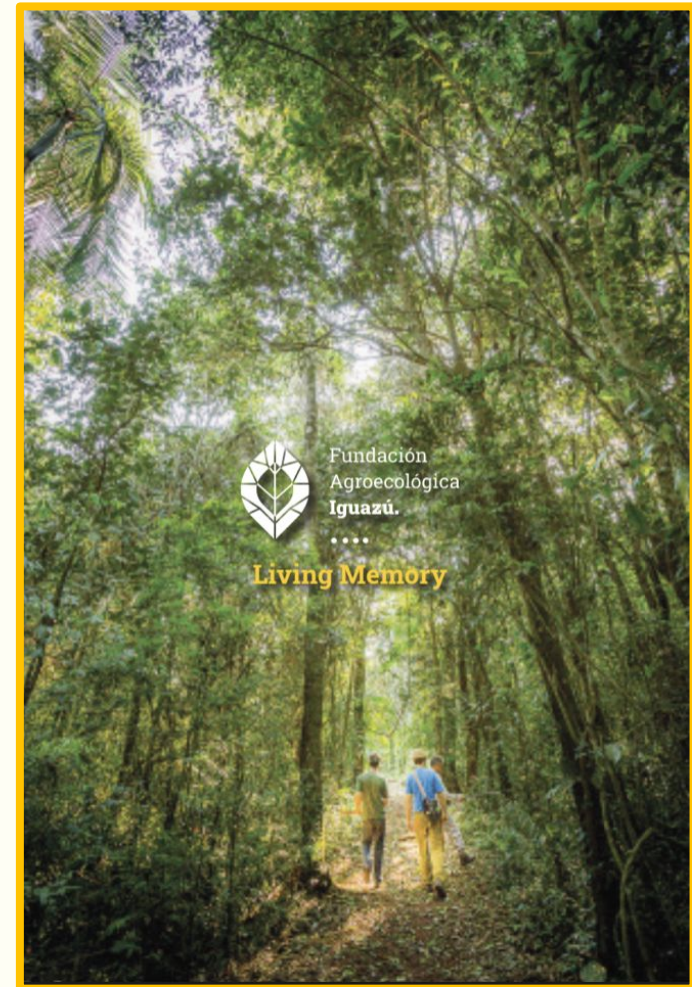
How?

Designing through innovative embodied biomimicry and the yerba mate knowledge the conditions conducive to life.

What?

“Connecting organizations representing Living Systems”

- 1- Educate about regenerative agroecological systems.
- 2- Investigate biodiversity in the Atlantic Forest
- 3- Shade grown Yerba mate experimenting with different practices in agroecology.
- 4- Connect with business organizations, governments, NGOs, educational centers to articulate regenerative and systemic processes at the local, regional and global levels.



 [Read here to know more about FAI](#)



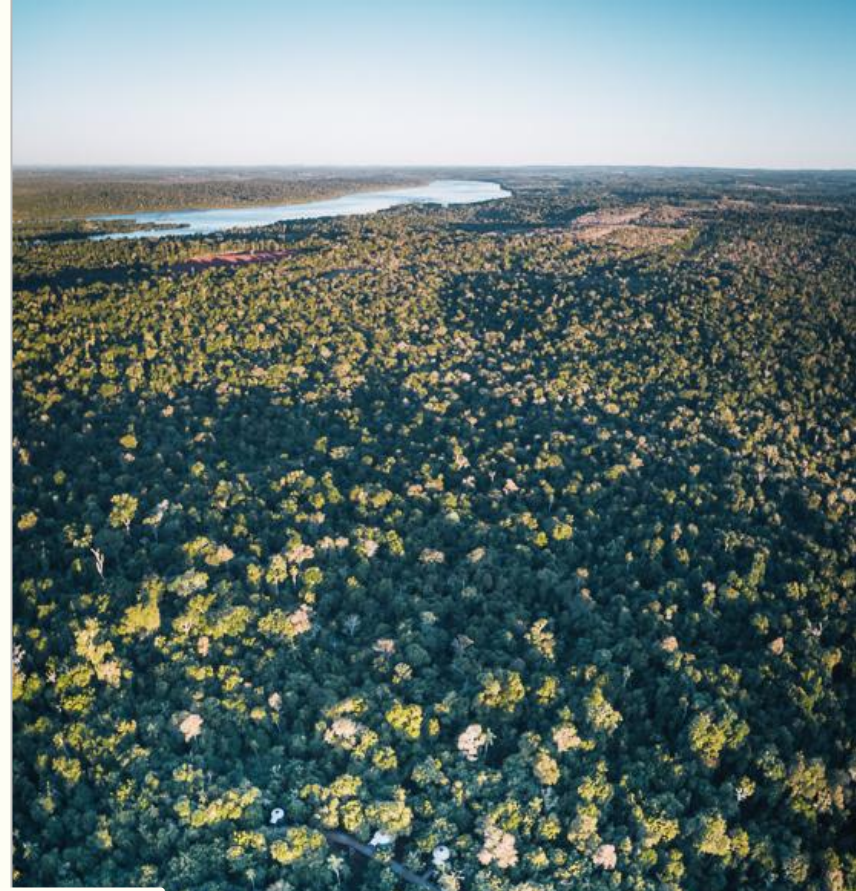
OUR POWER OF PLACE

where do we dream of a totally regenerative future?



In the Atlantic forest.

Home of our sacred yerba mate plant



OUR DOMAINS

We implement agroecological field practices to regenerate the Atlantic Rainforest and promote regenerative agricultural production to promote a healthy planet, seeking to become a reference site for the promotion of these practices in the region.

In this domain, represented by the yerba mate plant and the element of air, we work on five programs: shade grown yerba mate, yerba mate and native species nursery, agroecological gardens, biopreparations (agricultural products produced from organic matter), and yerba mate crop certifications.

We conduct and support research on regenerative agroecological systems for local and regional development that respects people and nature. Our wildlife monitoring program and our facilities are available for institutions and scholars to conduct their own research.

We teach about regenerative agroecological systems in the Atlantic Rainforest region to foster regenerative agriculture and a healthy planet. This element, represented by the Toco Toucan and the element of earth, has four basic programs. Two connect us with local schools: FAI Visits Schools and Schools Visit FAI. We also produce educational material through our FAI Bio-library and pursue further ties in the education community through our learning network.

We connect with other institutions and actors to expand our regenerative systems approach at the local, regional and global levels.

Our five programs in this domain are the signing of framework agreements in collaboration with other institutions; opening our foundation to volunteers; making our facilities available for fruitful conversations; opening our reserve to visitors from other institutions and the general public; and communicating about who we are and what we do to expand the regeneration network.



2. OUR RESULTS: Data & Milestones 2022 (January/December)



Spreading
the seeds of
LIFE

**OUR RESULTS:
DATA 2022**
(January/December)



Shade Grown Yerba Mate

- Work on plantations:
 - 627** Work hours
 - 603** Liters of fuel
- Native trees planted in yerba mate plantations in RAIz 2
 - 275** native trees
- Yerba mate seedlings planted in RAIz 1
 - 650** seedlings
- Yerba mate harvest 2022
 - 11** plots
 - 7.502** kg green leaf
 - 2.617** kg de canchada



Native Species Nursery

- Updated inventory:
 - 4.960** native plants
 - 3.030** yerba mate plants
- Donation INYM 2021-2022 (Tree-planting project in yerba mate plantations)
 - 350** native trees. End of agreement for 3.000 plants.
- Donation INYM 2022-2023 (Renewal of tree-planting project in yerba mate plantations)
 - 1.820** native species (In agreement process for 2000 plants)
- Donation to neighbors
 - 185** native species
- Donation to reforestation projects
 - 150** native trees to Fundación Hora de Obrar (to incorporate agroforestry garden design in Mbya Guaraní communities)
 - 300** native trees to Aves Argentinas (for reforestation and incorporation in their yerba plantations)
 - 150** native trees to Comandante Andresito (to reforest the new Municipal Reserve)
- Donation of native species to schools
 - 25** native trees

Agroecological gardens

- Training and implementation in Biointensive Organic Garden for a total of three different Agroecological Garden designs in RAIz 1
- Soil preparation with compost and mulching of 1.104 m² between the three gardens
- Seasonal crop rotation
- Incorporation of aromatics and ornamentals for biological control
- Productive gardens year round from summer 2021 to spring 2022
- Diversity of 22 horticultural species, five fruit species and 10 aromatic, ornamental and medicinal species
- Destination of agroecological vegetables harvested from our gardens
 - Donations to community and school cafeterias: **80 kg**
 - Internal consumption by employees and their families: **160 kg**
 - Consumption during events at the CERREVI Center: **125 kg**

Certifications

- Approval in 2022 of certifications of collaborative work with Guayakí Latinamerica: OIA, ROC, FFL, DEMETER

Biopreparations

- Incorporation, production and application of Biofoliar Liquid Fertilizer in plantations at RAIz 1 and 2
- Production and application of Fladen, 500 and 501 biodynamic preparations in yerba mate plantations, nursery and gardens
- Solid fertilizer
 - 32** piles of Bokashi (3.200 kg)
 - 8** biodynamic composts (1.800 kg)
- Biodynamic preparations
 - Roble - 3 units
 - Manzanilla - 3 units
 - Milenrama - 2 units
 - Valeriana - 2 units
 - Ortiga - 3 units
 - Dandelion - units
 - 500: 18 3-liter bottles and 11 1.5-liter bottles
 - 501: 1 3-liter bottle Roble
 - Fladen: 8 3-liter bottles
- Biofoliar liquid fertilizer
 - 300** concentrated liters
- Organic repellents
 - 10** liters garlic-chile concentrated repellent
 - 40** ash broth



Nature-Based Education

11 seventh-graders, their teacher and school director visited FAI

24 sixth and seventh-graders, three teachers and school director took part in our workshop on "Regeneration and Interdependence" during our visits to schools.

116 students ages 9-13 participated in the new workshop on "Green Corridors"

FAI Bio Library

- **40** hours filming high quality video material
- Redesign of Green Corridors workshop
- Teaching sequences for "Regeneration and Interdependence" workshop
- FAIbulosa Magazine. Printed teaching material for school children. (Planning, design and layout)
- Informative brochure on Agroforestry Systems as support material for school visits. (Planning, design and model)

Learning network

10 participations in virtual or in-person events with different institutions involved in the regeneration of ecosystems.

24 university students from UNaM visited FAI

27 youth from the NGO Rios to Rivers visited FAI

5 university ranger students visited FAI

Regenerative Networks workshop in Buenos Aires hosted by FAI with 50 regenerative leaders from Argentina, Italy, South America and Egypt.



3 doctoral dissertation investigations in progress

Yaguareté sighted in RAIz 1



5 fruitful dialogues sessions

5 Why FAI Fruitful Dialogues Sessions

5 agreements signed with different institutions

3 15-day volunteer experiences

23 representatives from different areas of science, agriculture, art and business visited

150 people visited the FAI Reserve in 2022

200 new posts in Social Media

2.240 IG followers





OUR RESULTS:

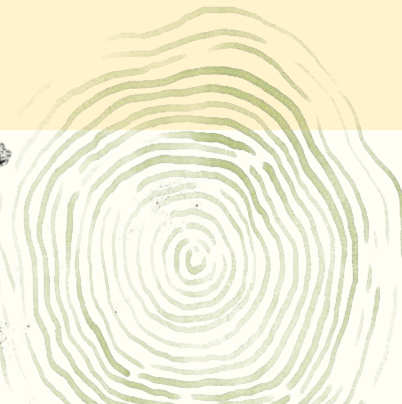
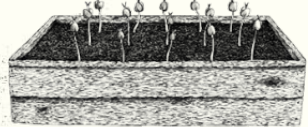
Data & Milestones 2022

DO. EDUCATE. RESEARCH. CONNECT

(January/December)



2022	January	February	March	April	May	June	July	August	September	October	November	December		
Shade Grown Yerba Mate Plantations		Foliar biofertilizer applied	Biodynamic preparations applied	Plantation maintenance Native species planted in RAIZ 2		Biodynamic preparations applied	Plantation maintenance YERBA MATE HARVEST WITH Guayaki Latin America	Yerba mate planted in RAIZ 1 Native species planted in RAIZ 2		Hilling of yerba mate seedlings	Plantation maintenance Boton de oro control intervention			
Native Species Nursery	Transplantation of native species from nursery	Substrate prepared for nursery	Recolección y germinación de semillas de Yerba Mate	Transplantation of native species from nursery	Substrate prepared for nursery	Native tree donations to neighbors and schools	Transplantation of native species from nursery	Substrate prepared for nursery	Donation of native species for reforestation projects			Substrate prepared for nursery		
								Donation of native species for arborization project with INYM in yerba plantations						
								Transplantation of yerba mate from nursery	Reorganization of native plants stock	Transplantation of native species from nursery	Treatment of native seeds for germination			
Agroecological Gardens		Annual planning of gardens	Soil prep for gardens	Fall sowing and transplantation in gardens	Soil prep for gardens	Winter sowing and transplantation in gardens	Biointensive Garden started	Soil prep for gardens	Spring sowing and transplantation in gardens		Fruit trees plantation	Soil prep for gardens		
Biopreparations	Foliar biofertilizer production	Solid fertilizer production	Production of biodynamic preparation 500	Solid fertilizer production	Production of organic repellents	Control and observation of horses and oxen	Conditioning of storage area for biodynamic preparations	Organic fertilizer production	Production of biodynamic preparation 501	Application of biodynamic preparations in gardens and nursery	Solid fertilizer production	Foliar biofertilizer production		
				Application of biodynamic preparations in gardens and nursery										
Certifications			OIA Inspection Certification				ROC Inspection Certification		DEMETER Inspection Certification					
					FFL Inspection Certification									





2022		Jan.	February	March	April	May	June	July	August	September	October	November	December
Nature-based education at FAI:	Schools visit FAI			Reorganization of material for PEA visits, including data related to 2021 diagnostic			Design of new experience for school visits with learning sequence. Introductory module: Regeneration and Interdependence	Design of new experience for school visits with learning sequence. Introductory module: Regeneration and Interdependence	Design of new experience for school visits with learning sequence. Introductory module: Regeneration and Interdependence	Resumed school visits at the reserve. "Regeneration and Interdependence Workshop". Caburei school.			Final reports of each of our Nature Based Learning programmes.
	FAI visits schools									Green corridors workshop at 3 schools - 6 courses.			
FAI Bio-Library						Redesign of green corridors workshop			FAI education manual				
						Planning, design and layout of FAIbulosa magazine. Learning materials printed for students.							
						Planning, design and layout of information brochure on Agroforestry Systems to support school visits.							
Learning Network		Visit by youth from Rios to Rivers NGO	Exhibit at virtual event "BioLeadership Project"	Training Workshop "Regenerative Capitalism"	Participation in event Yerba Mate Production and Conservation at Puente Verde Reserve	Visits by UNaM Agroecology students	Biointensive organic gardening workshop at FAI	Presentation in UNESCO sustainability course at UdeSA.	Guayaki Summer Gathering	Collaboration and participation at Indigenous Sound Art Festival	Participation in Sound Autobiography workshop.	Visits by UNaM Ranger students	Workshop in Buenos Aires: Regenerative networks of System B with representatives from Italy, South America and Egypt.
			Presentation in course on regional economies. Mayma				Presentation in Sustainability in Latam Course at UdeSA						





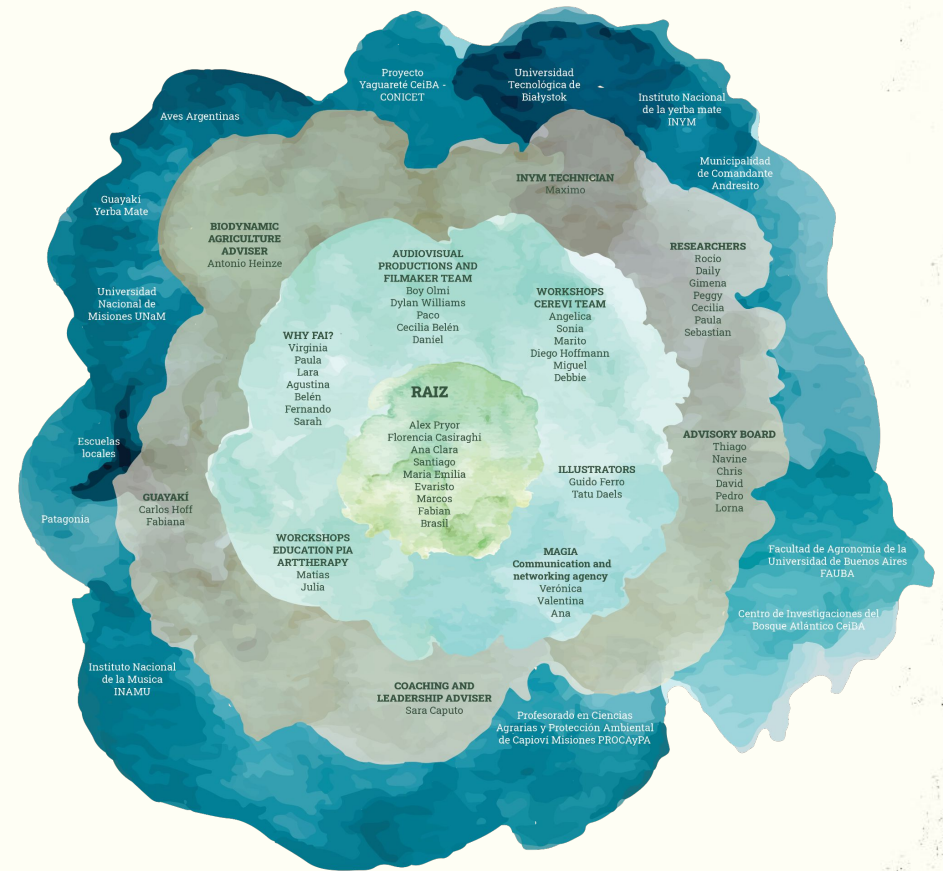
	January	February	March	April	May	June	July	August	September	October	November	December	
Research at FAI			Peggy Thalmayr takes first samples taken of Euterpe Edulis leaves and fruit for her research	Cecilia Fasano takes soil samples for her research	Research begins with UNaM Agroecology students for application of sustainability indicators in yerba mate agroecological systems at FAI		Peggy Thalmayr takes second samples taken of Euterpe Edulis leaves and fruit for her research	Presentation of results from research by UNaM agroecology students at FAI		Sort of past investigations in Drive. for easy access to research history.			
Internal wildlife monitoring				Emilia installs camera traps in the swamp zone	Yaguareté recorded on camera trap in RAIZ 1				Presentation and approval of study on mammals in yerba mate plantations by Dr. Paula Cruz	Installation of camera traps and recording of mammals in RAIZ 1			
Data & records	Rainfall records												
	Entries and exits of people of FAI												
	Destination of trees from the Nursery												
							Stock control and storage of biodynamic preparations			Stock control and storage of biodynamic preparations			
	Monthly reports of activities in RAIZ 1 and 2												
	Weekly summaries from planning meetings of the FAI team												
	Record of water use and electricity												
	Record of interventions in the yerba mate plantations												
	Inventory of natives and yerba mate from the Nursery					Inventory of natives and yerba mate from the Nursery					Inventory of natives and yerba mate from the Nursery		
								Yerba mate harvest yields					
								Harvest Report 2022					
	Record of planting seedlings, transplants and preparation of fertilizers												
	Field notebook												
	Internal wildlife monitoring records												




	January	February	March	April	May	June	July	August	September	October	November	December
CEREVI		Weather-proofing of deck	Yurt tents cleaned	Fruitful conversations: What is the value of a reserve?		Fruitful conversations: What is biodiversity? Filming at CEREVI	Fruitful conversations: What is caretaking? Solar panels and generator maintenance	Weather-proofing of deck	Fruitful conversations: What is learning? Yurt tents cleaned	Fruitful conversations: What is leadership in regenerative worlds?		Fruitful conversations in Buenos Aires. Regenerative System B networks. Italy, South America and Egypt. 50+ participants
Bridges for regeneration							Renewal of tree-planting project in plantations with INYM		Framework agreement with Secretaría del Agro y Producción, Municipality of Andresito Renewal of framework agreement with CeIBA Framework agreement with UNaM (Universidad Nacional de Misiones)	Framework agreement with INAMU (Instituto Nacional de la Musica) Collaboration with CeIBA for initiative: Yaguareté Territory in Iguazu National Park		
Volunteers	Judith from Mendoza	Julie Raulot from France			Daniela Milano from Chubut							
Regenerative visits		Weston Boyles, president of Rios to Rivers NGO	Helena Henneken	Antonio Heinze, biodynamic agriculture consultant	Guillermo Reutemann, UNaM El Dorado Forestry Sciences faculty member	Boy Olmi, actor and director Sergio Lievendon	Fernando Pia, CIESA project director Nanan, Brazilian musician		Eduard Muller, scientist and promoter of educational innovation and regenerative development	Liliana Ortega, representative of REDD+ carbon monitoring method Co-founders of Guayaki Yerba Mate Stephan Kosak, Guayaki Yerba Mate CEO Navine Karim, Head of Impact, Guayaki Yerba Mate	Clara, national park ranger Uruguay	Ambacebadora Guayakí
Network communications	200 social media posts								Interview on Bichos de Campo TV program	3 provincial radio interviews		Report 2022

3. Our Team Structure: MANDALA CONCENTRIC CIRCLES.

Core Circle
 Inner Circle
 Collaboration Circle
 Networking Circle.



3. Our Team Structure: MANDALA ORGANIZATION



Our foundation is the result of constant collaboration. A nested system. Just like the yerba mate plant that isn't just a plant, our team is not just its members and our territory isn't just measured by the square meters of our reserves. At FAI we work to grow and grow to work.

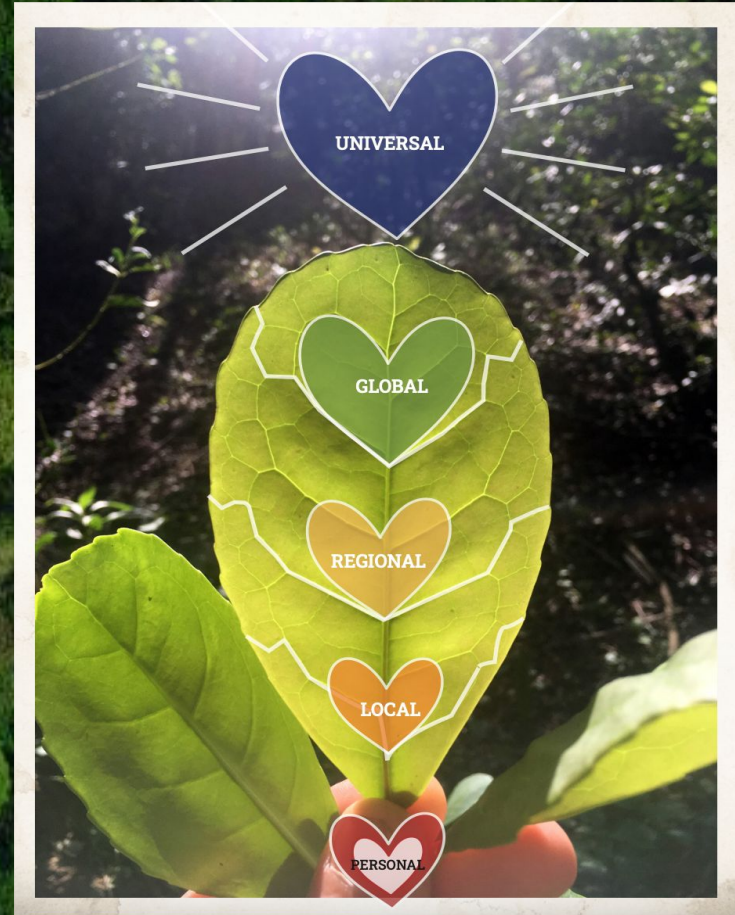
At FAI we have responsibilities, not just fixed positions. Each one of us has moveable roles that are in constant iteration and modification, adapting to better nourish everything around us, generating symbiosis and growth.

In addition to the day-to-day work our nucleous permanent staff members do at the foundation, during 2022 we collaborated with a wide array of outside consultants and other organizations specializing in each of FAI's work domains. This brings biologists, research specialists, economists, educators, artists, communicators, facilitators, teachers, illustrators and graphic designers into our network.

This allowed us to expand our territory of action and amplify our voice, enriching our actions through a variety of stimuli, knowledge and perspectives that add great value to the systemic design and execution of our programs.

4. What's "WHY FAI"?

"WHY FAI?" was an 8-month interdisciplinary project to address the transition in the FAI-GLAD separation and provide a 3-year plan in addition to existing Operations, Administration and Projects.



We were prototyping the best emerging future of FAI-Guayaki under the question

What is FAI's best plan for the next 12 years?

Why FAI Timeline. Apusama workshop.



Otra manera de observar lo mismo (pero distinto 🤔)

Why FAI Timeline

4- TALKING with REFERENTS

Fruitful conversations with local, regional, global & FAI's Advisory Board to help us improve scenarios and our 5 year Plan



Call 1

Guayakí LT
Canadá

Call 2

Call 3

We are almost here!

MAY

JUN

JUL

AUG

SEP

OCT

NOV

1- SYSTEMATIZING all the current PROCESSES in FAI:

Educate | Research | Connect & Share | Implement

Done

2- COMPILING the last 12 years of stories, data, photos, projects so that they are easily available.

Done

3- Creating GENERATIVE AND REGENERATIVE INDICATORS

to measure the past and future impact of FAI

Done

5- Exploring & Creating different future FAI SCENARIOS

From VERBS DOMAINS to EARTH DOMAINS

6- Exploring & Creating a Regenerative Planification template with 3 Horizons

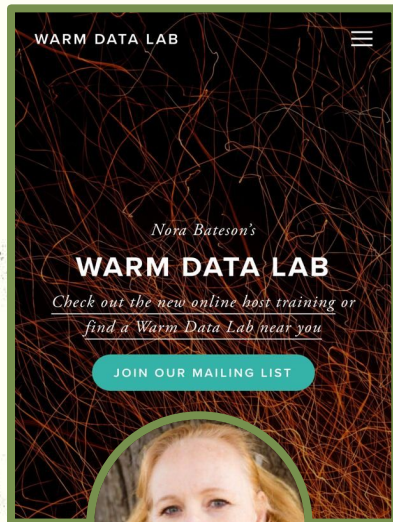
Done

7- Presenting the 3-year Plan to the Board

2022.11.17

“As above, so below; as below, so above” – The Kybalion.

Some of our inspiration & frameworks



**Nora
Bateson**

Warm Data Lab



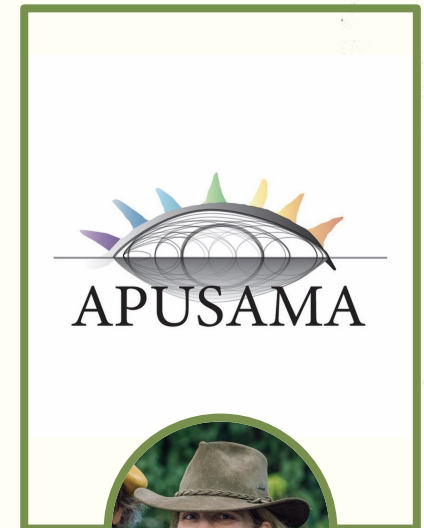
**Daniel Christian
Wahl**

Designing
Regenerative
Cultures



**International
Future Forum**

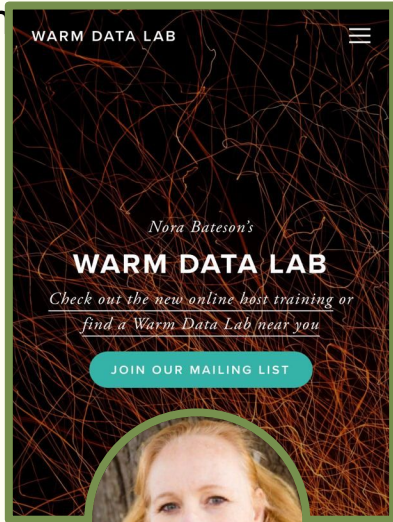
3 Horizons



APUSAMA

Embodied spiral
method

Our inspiration & frameworks



**Nora
Bateson**
Warm Data Lab

[Warm Data Lab](#)

[Warm Data By Nora Bateson](#)



There are 2 ways to go to the market:
“I go to the market to buy bread.
I go to the market and I buy bread.”

WHAT IS WARM DATA?

Our inspiration & frameworks



Daniel Christian Wahl

Designing Regenerative Cultures

This book is about what I have learned from deep listening and living these questions.

It explores how we might live our way rather than know our way into the future, how we might stop chasing the mirage of certainty and control in a complex and unpredictable world.

How can we collaborate in the creation of diverse regenerative cultures adapted to the unique biocultural conditions of place?

How can we create conditions conducive to life?

Daniel Wahl. Rsa award winner for his benchmark work on the field of Regeneration

<https://designforsustainability.medium.com/>

[Daniel & Alex Dialogue](#)

Our inspiration & frameworks

[Indice Conversaciones Advisory Board](#)

[Three Horizons Practice Network](#)

[IFF-Praxis](#)

[Resources](#)

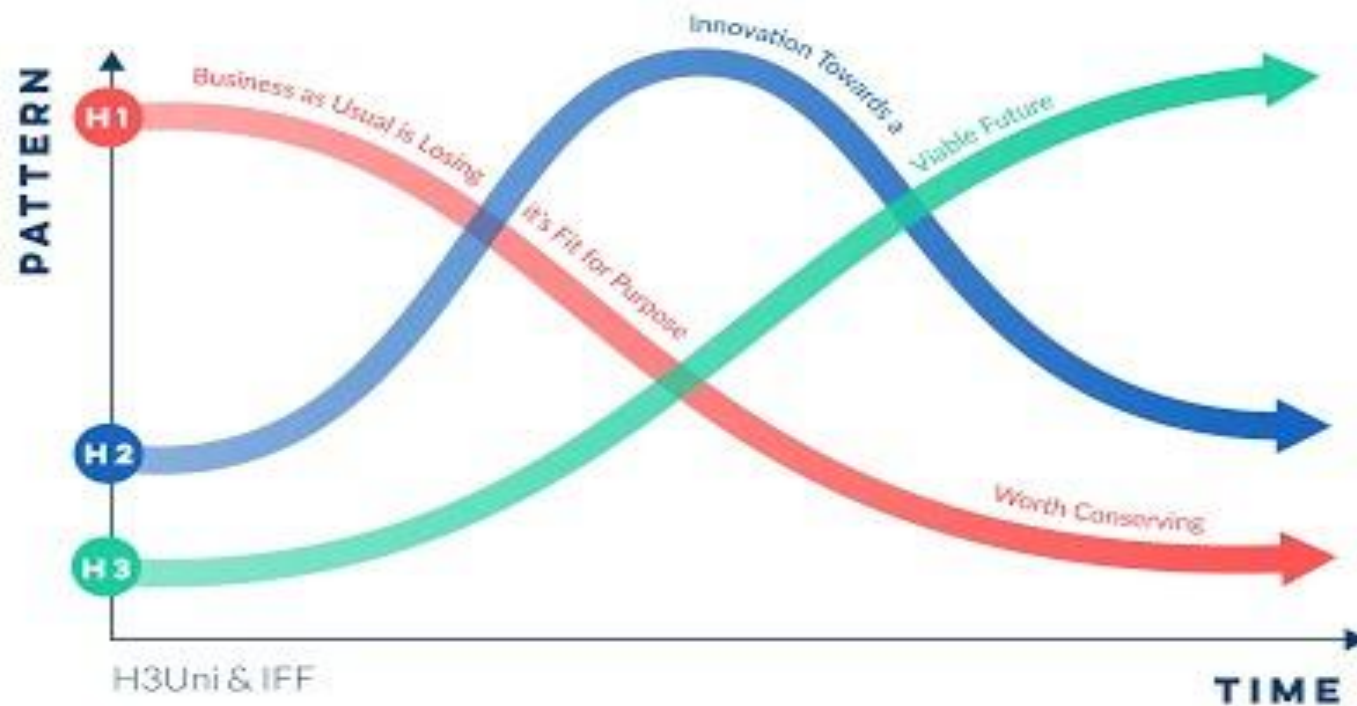
[Three Horizons Framework - a quick introduction](#)

[3 horizons. An introduction.](#)

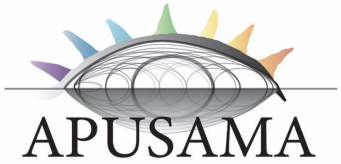


International Future Forum

3 Horizons



Our inspiration & frameworks



APUSAMA Embodied regenerative design..

Through tangible play & facilitation techniques we embodied into practical actions , design and strategy, our collective dreams.



FAI Golden Ratio 2022

FAI - Backlog completo

Plan a 12 años

Memoria Viva

Haciendo sentid...

WHY FAI?
Miro strategic annual steps.





Transition to Separation

It has been a complex process of change with great opportunities to observe ourselves internally and externally.



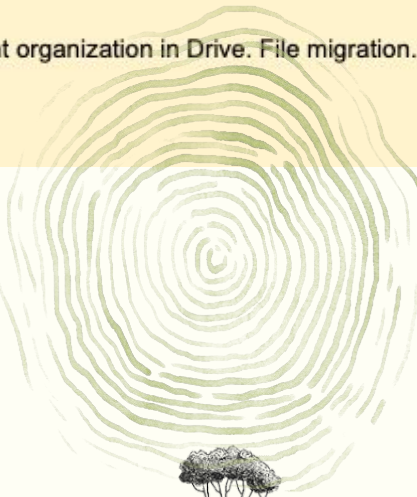
Operations Results

WHY FAI Results

Transition to separation

Operations Results

January	February	March	April	May	June	July	August	September	October	November	December	
Carlos Hoff will provide technical services exclusively for Guayaki Latinamerica		Ownership of two trucks ceded to FAI	Emilia takes charge	Nursery ownership ceded to FAI	Territory personnel become FAI employees.	Ana Clara takes charge of Administration and Finance				New FAI Office, Buenos Aires.		Signature of GLAD documents by Alex & Flor to consolidate Guayaki's executive separation
Santiago DA begins his duties			New role for Santiago DA as coordinator of project development	Document organization in Drive. File migration.								Estudio Beccar Varela Legal Council advice for FAI's next steps.
Santiago DA records and processes documentation of FAI programs												



Why FAI



WHY FAI Results

2022	January	February	March	April	May	June	July	August	September	October	November	December
Equipo Why FAI		Work design strategy	Work design strategy. Lara Gutierrez (Living memory), Paula Barberis (Vivos indicators), Santiago Diaz Arnaudo (Vivos processes) join team.	First meeting on site with Why FAI team. Melisa Diaz Acuña (Regenerative Budget) joins team.	Virginia Regner, facilitator and Agile Methodologies coach, joins team.	First meeting in Misiones with Why FAI team. Melisa Diaz Acuña (Regenerative Budget) joins.	First meeting in Misiones with Why FAI team. Agustina Fiala (graphic Designer) joins.		Third meeting with Why FAI team.	Fourth meeting with Why FAI team.	Why FAI 2022 Closure.	
Living memory			Living Memory Index design	Milestones research 2010. 2022	Writing living memory	First printing and review, programs by domain	Approval of One pagers by Guayaki Sudamérica. Graphic design of living memory.	Publication of Living Memory. Fernando Santillán	Living Memory translation: Sarah Smith	Memoria Viva published in English	Living Memory final details and adjustments	Living Memory published in English & Spanish.
Living processes	Processes in field recorded		Systemization of processes	Design and writing 17: One Pagers								
Living indicators				Hypothesis: How do we measure what we don't see?	Research into ways of measuring (3horizons, Wahl, Bateson, Maturana)	Design of indicators: Business as usual, Regenerative & Generators	Design of indicators: Business as usual, Regenerative & Generators	Design of indicators: Business as usual, Regenerative & Generators	Design of indicators: Business as usual, Regenerative & Generators	Approval of prototype	PPT presentation ready to share with Guayaki's Board.	Contacted Nora Bateson to open dialogue and Warm Data Lab work and Cerevi Lab Work.
Living dialogues				Advisory Board strategy design		First meeting of advisory board		Individual 30 minute call. Advisory board	Second meeting, advisory board	Third meeting, advisory board	Fourth meeting, advisory board	
12-year plan							Design of meetings to lay out Scenarios	4 scenarios meetings: From domains to Earth domains.	12-, 5-, and 3-year plan frameworks .		Final PPT with 3 year plan.	
Regenerative budget									3-horizons hypothesis as framework for budgets.	Regenerative budget spreadsheet. Filter with 7 principles, 20 questions. Programs improvements based on 12-year plan.	Final FAI's budget presented to Advisory board.	Final FAI's budget presented to GUayaki's CEO.

WHY FAI?

Team

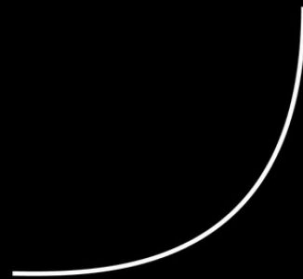
Melisa Díaz Acuña
Paula Barberis
Santiago Diaz Arnaudo
Agustina Fiala
Lara Gutierrez
Virginia Regner
Belen Dithurbide
Flor Casiraghi
Alex Pryor

Photography &
Filming Crew.
Boy Olmi Dylan Williams
Belén, Paco, Daniel



Our learning process

- **Regeneration & Innovation takes time, energy & caring for the process.**
- **We invest time in sharing our findings with others.**
- **We want to bridge business as usual with authentic regenerative & open source practices.**



THEORY



PRACTICE

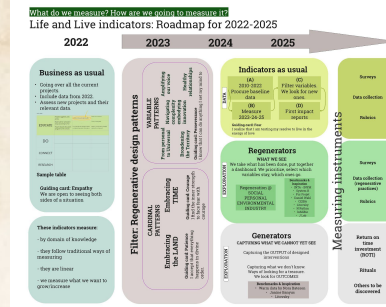
Why FAI 2022 Projects

LIVING PROCESSES



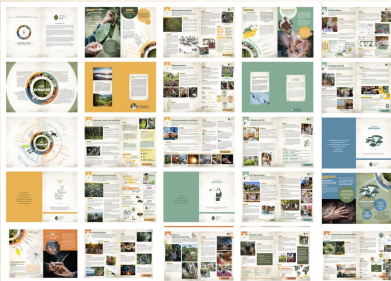
Process that seeks to collect, analyze and tell how we do what we do, in a schematic, articulated, detailed and in-depth way, with respect to FAI's work areas: Educate, Research, Connect and Do. Period covered: 2010-2021

LIVING INDICATORS



At FAI we are exploring new ways of capturing value. We have set out to explore ways of measuring our impact, not only hard data, but also what is important but escapes traditional indicators.

LIVING MEMORY



To honour FAI's 12 years of work, we decided to summarize our processes and projects, into this beautiful graphic Living Memory That brings our Why, How & What.

LIVING DIALOGUES



The purpose was to provide fresh points of view, knowledge and experience to the WHY FAI project in order to add value to the 3-year plan

A Deep Dive into Why FAI results

LIVING PROCESSES

DO



EDUCATE



RESEARCH



CONNECT



Process that seeks to collect, analyze and tell how we do what we do, in a schematic, articulated, detailed and in-depth way, with respect to FAI's work areas: Educate, Research, Connect and Do.

Period covered: 2010-2022

Living Processes. 1.0

 [Read here to know more](#)



Camera trap installation

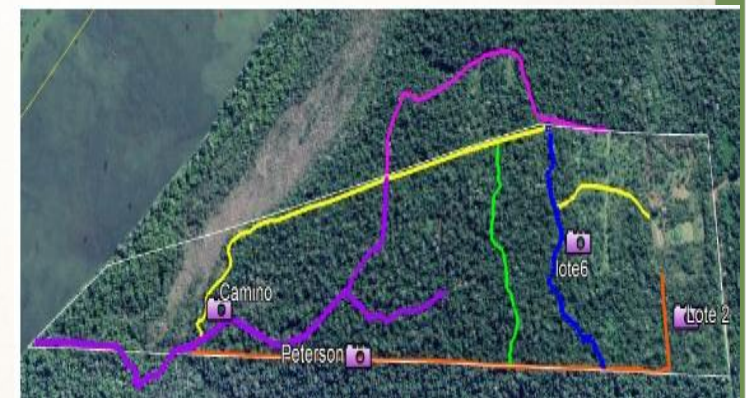


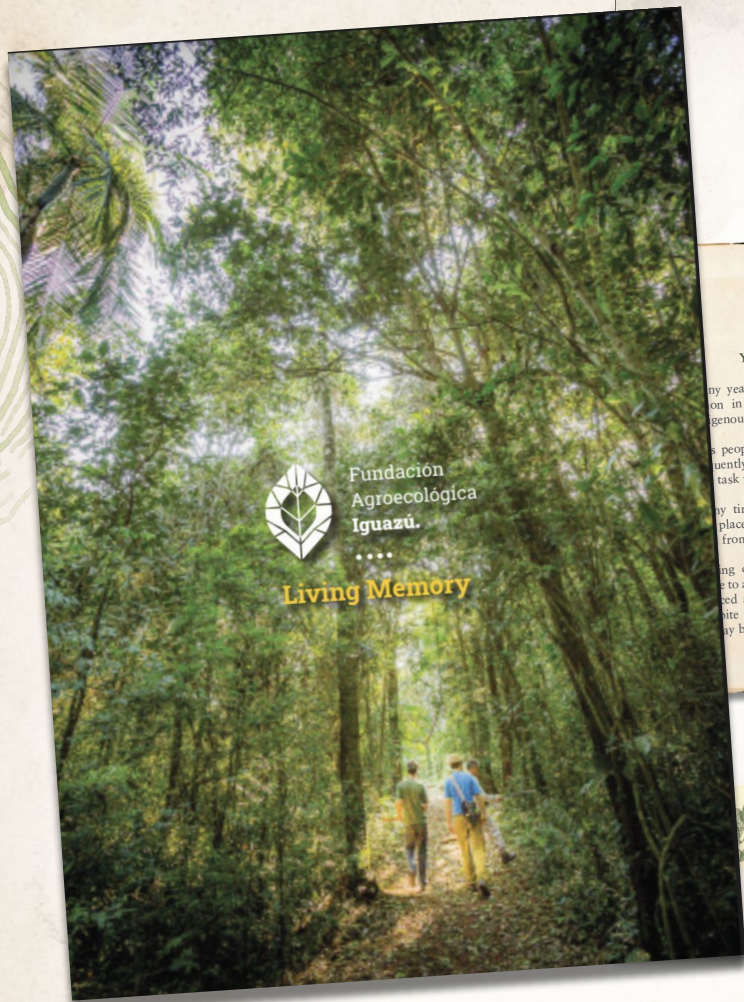
Yaguareté "Guayaki" at RAIZ I

Especie	Nombre científico	Orden	Estatus de Conservación (SAPREM, 2019)
Mono Cai	<i>Sapajus nitens</i>	Primates	Preocupación menor
Comadreja de orejas negras	<i>Didelphis aurita</i>	Didelphimorphia	Preocupación menor
Yupai	<i>Metachirus nudicaudatus</i>	Didelphimorphia	Preocupación menor
Comadreja orejas blancas	<i>Didelphis albiventris</i>	Didelphimorphia	Preocupación menor
Tamandú	<i>Tamandua tetradactyla</i>	Pilosa	Preocupación menor
Tatú nueve bandas	<i>Dasyurus novemcinctus</i>	Cingulata	Preocupación menor
Puma	<i>Puma concolor</i>	Carnivora	Preocupación menor
Ocelote	<i>Leopardus pardalis</i>	Carnivora	Vulnerable
Zorro de monte	<i>Cercopithecus thous</i>	Carnivora	Preocupación menor
Huón menor	<i>Galictis sp.</i>	Carnivora	Preocupación menor
Huón mayor	<i>Eira barbara</i>	Carnivora	Preocupación menor
Aguarú Popé	<i>Pitocyon cancrivorus</i>	Carnivora	Preocupación menor
Coati	<i>Nasua nasua</i>	Carnivora	Preocupación menor
Pecari de collar	<i>Pecari tajacu</i>	Artiodactyla	Preocupación menor
Pardo	<i>Mazama americana</i>	Artiodactyla	Preocupación menor
Tapir	<i>Tapirus terrestris</i>	Perissodactyla	Vulnerable
Capincho	<i>Hydrochoerus hydrochaeris</i>	Rodentia	Preocupación menor
Ardilla	<i>Sciurus ingrami</i>	Rodentia	Preocupación menor
Aguti	<i>Dasyprocta acarae</i>	Rodentia	Preocupación menor
Tapetí	<i>Syrrhaptes brasiliensis</i>	Rodentia	Preocupación menor
Yaguarundi	<i>Puma yagouaroundi</i>	Carnivora	Preocupación menor
Liebre europea	<i>Lepus europaeus</i>	Rodentia	Preocupación menor
Gato Tigris	<i>Leopardus tigrinus</i>	Carnivora	Preocupación menor
Zorro pitoco	<i>Speothos venaticus</i>	Carnivora	Vulnerable
Tatú rabo molle	<i>Cabassous tatouay</i>	Cingulata	Preocupación menor
Tatú de siete bandas	<i>Dasyurus septemcinctus</i>	Cingulata	Preocupación menor
Yaguareté	<i>panthera onca</i>	Carnivora	Peligro crítico
Nutria	<i>Lontra longicaudis</i>	Carnivora	Preocupación menor

Data & reports.

1. Observe
2. Register
3. Research
4. Design

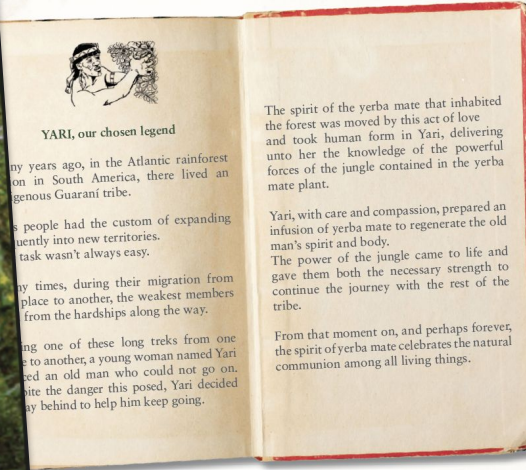




Fundación
Agroecológica
Iguazú.
...
Living Memory



The spirit of yerba mate



YARI, our chosen legend

Many years ago, in the Atlantic rainforest of South America, there lived an indigenous Guarani tribe. These people had the custom of expanding frequently into new territories. This task wasn't always easy. Many times, during their migration from place to another, the weakest members of the tribe suffered from the hardships along the way. During one of these long treks from one place to another, a young woman named Yari accompanied an old man who could not go on. Despite the danger this posed, Yari decided to go behind him to help him keep going.

The spirit of the yerba mate that inhabited the forest was moved by this act of love and took human form in Yari, delivering unto her the knowledge of the powerful forces of the jungle contained in the yerba mate plant. Yari, with care and compassion, prepared an infusion of yerba mate to regenerate the old man's spirit and body. The power of the jungle came to life and gave them both the necessary strength to continue the journey with the rest of the tribe. From that moment on, and perhaps forever, the spirit of yerba mate celebrates the natural communion among all living things.

Adaptation of the Legend of Caa Yari of the Guarani indigenous people, by Alex Pryor co-founder of Guayaki Yerba Mate

Yerba mate, consumed in 90% of homes in Argentina, Paraguay, Brazil and Uruguay (according to the National Yerba Mate Institute), is considered by some to be the drink of the gods. It also symbolizes compassion, dialogue, friendship and hospitality and is surrounded by different myths and legends. We at FAI take particular inspiration from the legend of Yari.



"What the eyes see, the heart feels."
Flor Casaraghi

Why we say FAI is a reserve and regeneration. This physical place allows us to heal from the inside out. Learning, pausing and putting into practice everything we learn from the land. Understanding place's past and our own to connect with the present and the future. We preserve the safe-guard the habitat for future generations. We protect species that are important to us. We care for the land after us. We work for our community, research and the parts that matter. We work to regenerate life by strengthening local communities through appreciation of culture, innovation and respect, generating models of dignified living in harmony with the natural surroundings.

FAI is on a constant search that goes from the core, the internal, the center of the spiral upwards to the top.

To honour FAI's 12 years of work, we decided to summarize our processes and projects, because we know we can't share what's not registered.

[Living Memory. 09.30 edition](#)

 **Read here to know more**



What do we measure? How are we going to measure it?

Life and Live indicators: Roadmap for 2022-2025



Business as usual

- Going over all the current projects.
- Include data from 2022.
- Assess new projects and their relevant data.

Sample table

These indicators measure:

- by domain of knowledge
- they follow traditional ways of measuring
- they are linear
- we measure what we want to grow/increase

FILTER: Regenerative design threads

1 CARDINAL THREADS

A - Embracing the LAND
Does it embrace the territory? Is it real?

B- Embracing TIME
Does it create conditions that favor life? Does it establish a regenerative pattern?

2 VARIABLE THREADS

A- From personal to Universal
B- Navigating complexity embodying innovation
C- Broadening the Territory
D- Amplifying our voice
E- Healthy relationships

Indicators as usual

DATA

(A) 2010-2022 Procure baseline data → (B) Measure 2023-24-25

(D) First impact reports → (C) Filter variables. We look for new ones.

Measuring instruments

- Surveys
- Data collection
- Rubrics

Regenerators

EXPLORATION

WHAT WE SEE
We take what has been done, put together a dashboard. We prioritize, select which variables stay, which ones go.

Regeneration @
SOCIAL
PERSONAL
ENVIRONMENTAL
INDUSTRY

Benchmarks & Inspiration
 • INTA - INYM - System B
 • Pur Projet - Daniel Wahl
 • CEIBA - Litovsky
 • N Rythm - InMiBio
 • J Lab

Measuring instruments

- Surveys
- Data collection (regenerative practices)
- Rubrics

Generators

EXPLORATION

CAPTURING WHAT WE CANNOT YET SEE
Capturing the OUTPUT of designed interventions

Capturing what we don't know. Ways of looking for a treasure. We look for OUTCOMES

Benchmarks & Inspiration
 • Warm data by Nora Bateson
 • Janine Banyus
 • Litovsky

Measuring instruments

- Return on time investment (ROTI)
- Rituals
- Others to be discovered

[Life and Living indicators](#)

Read here to know more



Advisory Board Purpose

The purpose was to provide fresh points of view, knowledge and experience to the WHY FAI project in order to add value to the 3-year plan that will be presented Nov. 2022 not only focusing on the foundation but also strengthening the relationship with Guayakí.

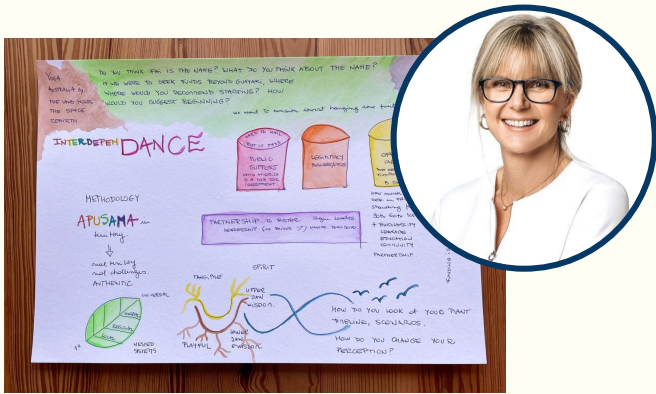
We pursue the combination of “Come to life” with “Regenerate life”.



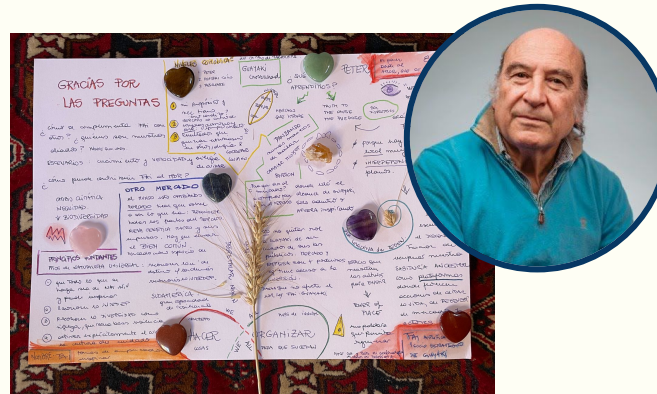
What was the time & dedication expected for the Advisory Board Members?
Without the need to prepare anything in advance on their side, in the last 5 months they participated in the following moments:

- 1. 90 minutes group call in July.**
Goal: Show them the progress and ask for advices in this initial instance.
- 2. 90 minutes group call in September.**
Goal: Present them the different scenarios that we built for FAI'S future o find blind spots and improvements
- 3. 90 minutes group call in October & November.**
Goal: Present the 3-year plan before doing it officially to the Guayaki board for its approval. Find all possible upgrades.
- 4. 30 minute monthly one-on-one call - Extra optional | Non mandatory**
In cases where the particular wisdom of one of you is considered necessary.

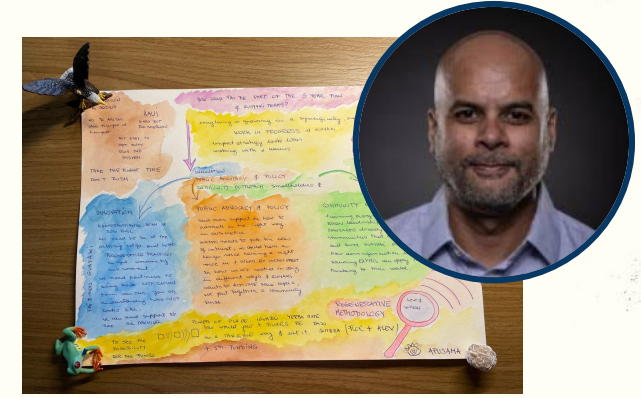
6 Fruitful conversations - Highlights



Funding is just money?



How can we change the market?
From personal to Universal



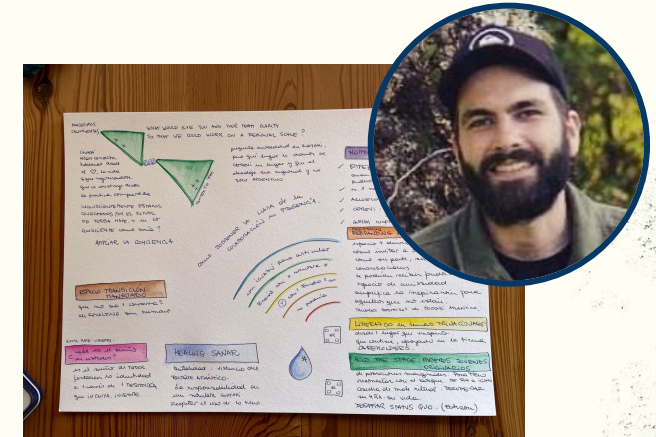
Innovation + Public Advocacy
Community Outreach + Funding



OSC2: as an example of how to celebrate together and expand outreach. Also: FOCUS!



From Sun to Shade: a tangible example of transition to regeneration



Hold the space for healing for different communities & first nations

Designing FAI's Future

2022: From Verb Domains



2022: To EARTH Domains

From do to Yerba Mate

From educate to Colibri

From research to Mycelium

From connect to Sky rivers

[FAI scenarios](#)

 **Read here to know more**





OUR NEXT 12 YEARS

From VERBS to EARTH DOMAINS



DO

FROM SUN TO SHADE
FROM LEAVES TO ROOTS
Ways of inhabiting the land
& working

YERBA
MATE

RESEARCH

FROM RESEARCH TO
UNDERSTANDING
Ways of knowing & embodying.

MYCELIUM

EDUCATE

FROM EDUCATION TO INSPIRATION
Ways of learning and expanding

COLIBRI

CONNECT

FROM LINKS TO NETWORKS.
Ways of inviting new careholders
and relating to each other.

SKY
RIVERS

Our current domains will be broadened & amplified to:

- apply & learn the **regenerative principles** in territory.
- foster **regenerative markets**: Promote transition from conventional Yerba Mate plantations to regenerative Shade Grown Yerba Mate plantations.
- promote **public policies** in regeneration & the Shade Grown Yerba Mate **Certification**
- provide **a healing place** for thoughtful meetings and conversations with different social actors
- **share & communicate** the experiences and learnings during the process

12 YEAR PLAN

Improved Projects	2023	2024	2025	2026	2027	2028	2029	2030	2031	2032	2033	2034
Nature Immersion Program (Ex-volunteer Program)												
External Communication Management												
New external Fundings												
Opening to the community: with the Municipality of Andresito												
Opening to the community: with INYM												
Opening to the community: with UNaM												
Opening to the community: with Proyecto Yaguareté (Ceiba)												
Opening to the community: with producers Yerba mate shade grown												
Opening to the community: with Local Markets												
FAI World Lab												
Partner Network Program												
CEREVI Development (Life Regeneration Center)												
Public Policies												
Poster Project together with Artists												
Brochures, manuals and practical material												
FAI Books: Learning Materials / FAI Pedagogical												
FAItheque: - Physical material for schools close to FAI. - Online library to download with all the resources that we are developing over time, available to any teacher. .												
Nature-based Education Program with schools												
FAIERS Network												
FAI Team: How our team works.												
Levels of Collaboration & Consultation between Guayakí / FAI												
Management of RAI 1 and 2: Yerba mate plantations												
Management of RAI 1 and 2: Native Nursery												
Management of RAI 1 and 2: Agroecological Gardens												
Management of RAI 1 and 2: Biopreparations												
Management of RAI 1 and 2: Regenerative Beekeeping												
Certifications												
Carbon Credit Certification												
Typification of Yerba mate shade grown												
Shade-conscious consumption strategies												
Yerba mate shade grown Biological Station												
Find a framework agreement that conducts research on wildlife monitoring records												
Deepen the investigation of Fauna in Yerba mate shade grown												
Program of researchers in action in the territory												
Development of Living Indicators												
APUSAMA Methodology												
New FAIers Methodology												
Citizen / Community Science												

REGENERATIVE BUDGET PLANNING TEMPLATE1

Regenerative Design Patterns												
Cardinal principles: Long term Commitment					Variable principles							
1. Embracing Time: Theory of the 3 Horizons (IFF)					2. Embracing the land	3. From personal to Universal	4. Amplifying our voice:	5. Broadening the Territory:	6. Navigating complexity through embodied innovation:	7. Healthy Relationships:		
3 Horizons Questions				Horizon (IFF)	Questions	Variable Principle questions						
Our Projects	Do they create conditions that favor life? Does it establish a regenerative pattern?	Does this activity attempt to cover basic operational needs during the transition?	Are there opportunities to generate or replace with activities that lead to deep systemic transformation?	Horizon (IFF)	Does it embrace the territory? It is real?	Is it relevant to humanity?	Does it amplify the voice?	Does it amplify the territory of action?	Does it allow to think, feel, stop, look and continue with your dreams following the golden thread?	Does it foster healthy bonding in your life and in nature?	Improvements to apply / Opportunity	Improved activity according to regenerative design patterns/regenerative patterns
Project 1	Yes	No	Yes	H3	Yes	Yes	It can be improved	Yes	It can be improved	It can be improved	Improvements	Project 1 Improved
Project 2	No	No	Yes	H2-	No	It can be improved	Yes	It can be improved	It can be improved	It can be improved	Improvements	Project 2 Improved
Project 3	Yes	Yes	Yes	H1	It can be improved	Yes	Yes	Yes	It can be improved	Yes	Improvements	Project 3 Improved

[Regenerative Template PPT](#)

 **Read here to know more**





Step by Step

1- Define what does regeneration mean for FAI

All **healthy relationships** that generate living conditions. Healthy relationships between:

me and nature,

nature and we,

we are nature

The strengthening of identity in dialogue with **diversity**.

The local sense and **nested systems** from personal to universal.

The connection of **mind, heart & action**.

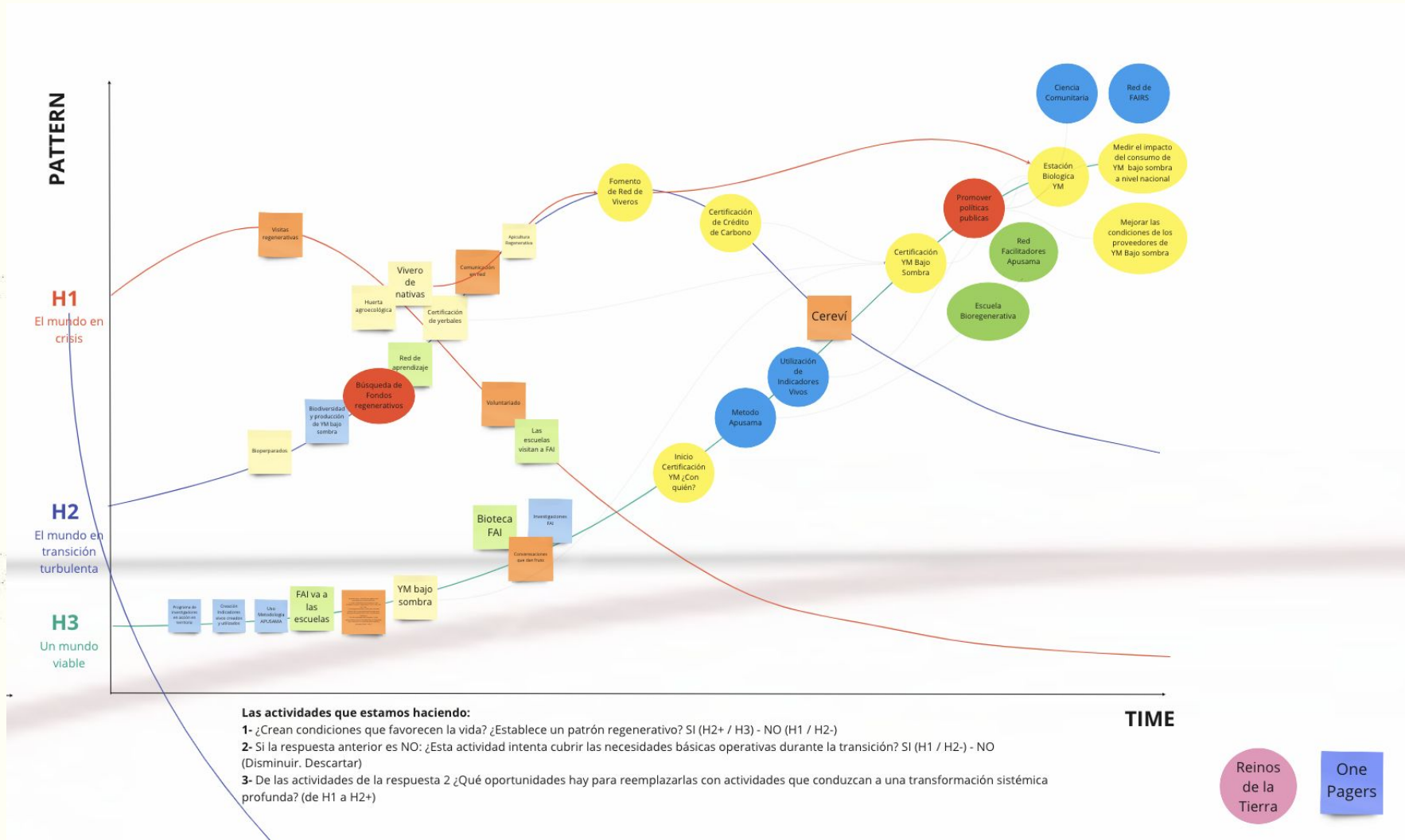
The **intertwined relationship** between water, oxygen, fire, earth & ether that allows us to regenerate in a very personal and the same time universal level.

Come to life & Regenerate Life interdependance. The awakening of enthusiasm and the will to live: **being enthusiastic about life.**



Step by Step

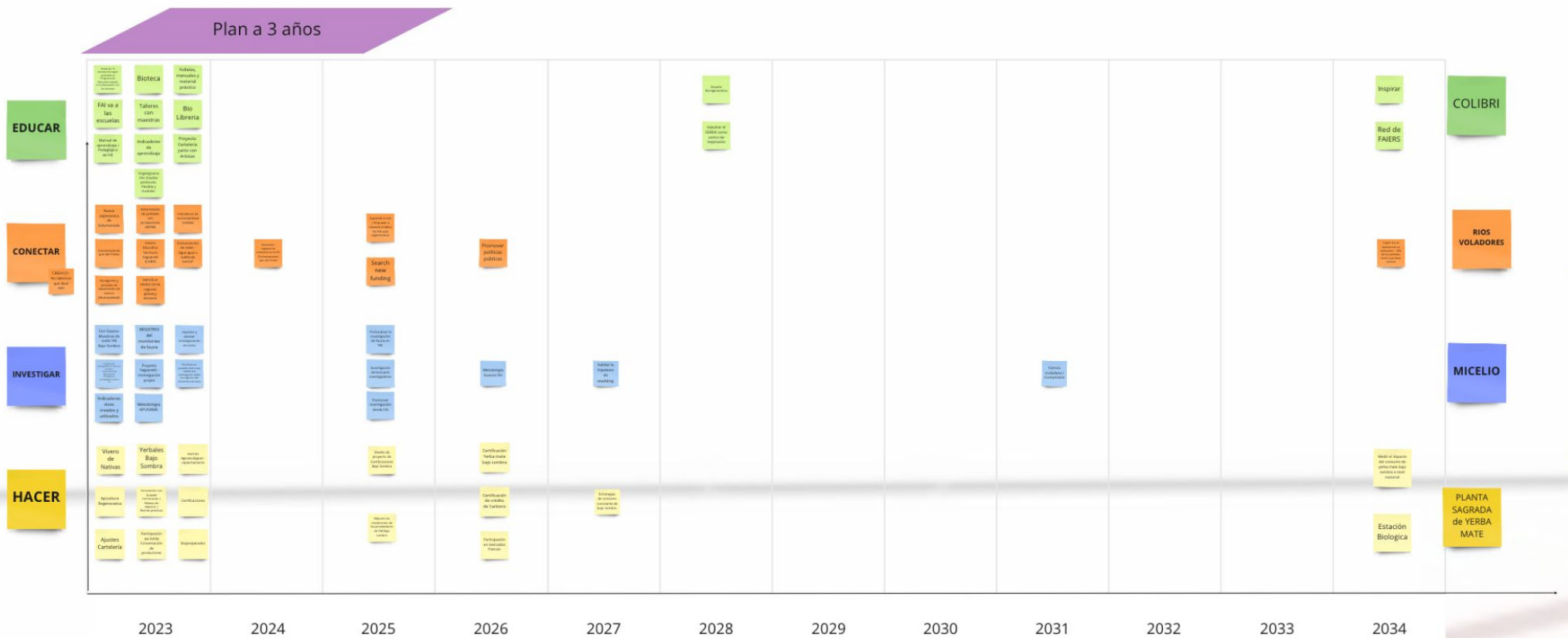
How do we translate regeneration principles into **a budget regenerative design template?**





Step by Step

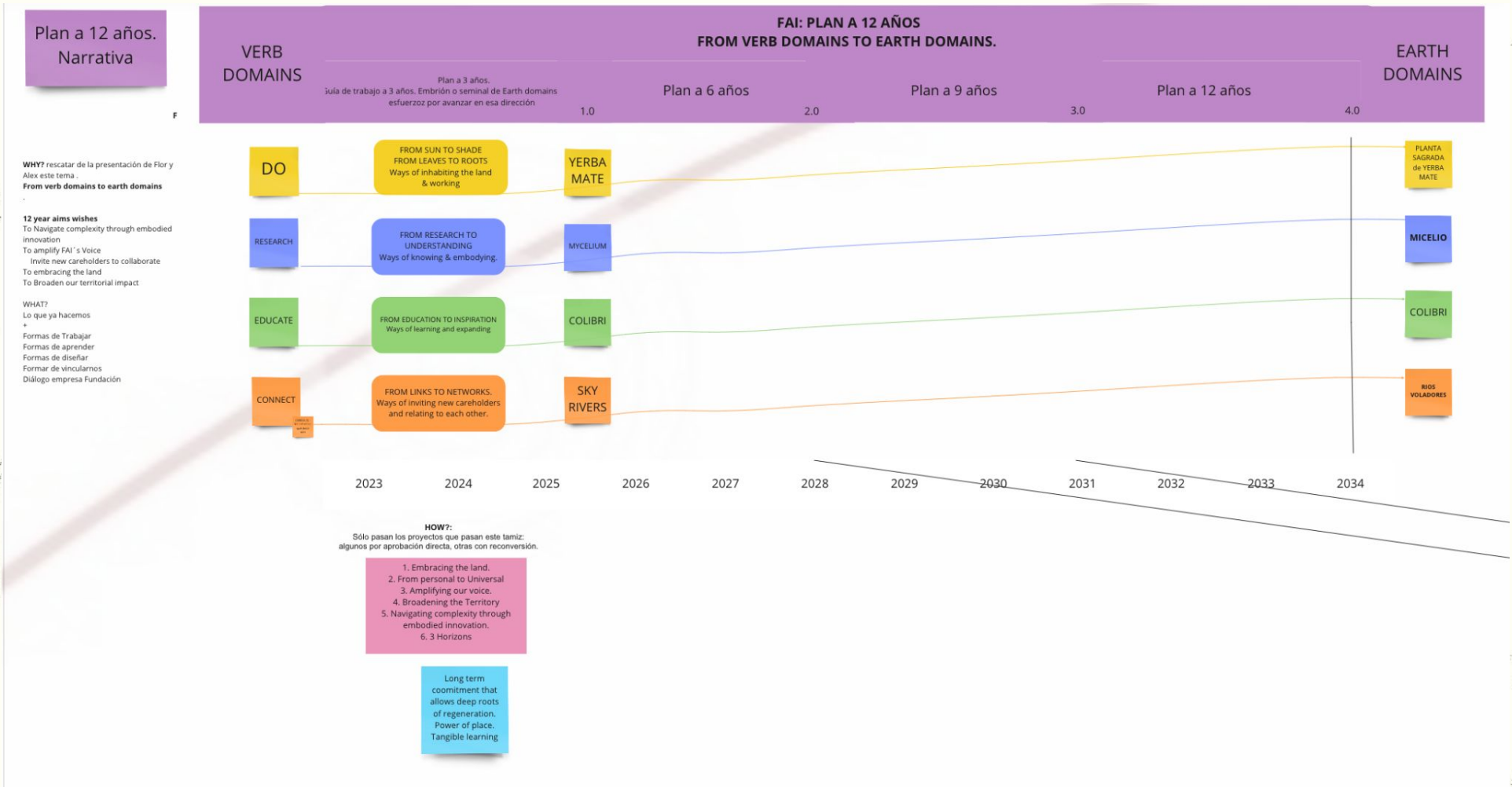
How do we translate regeneration principles into **a budget regenerative design template?**





Step by Step

How do we translate regeneration principles into **a budget regenerative design template?**



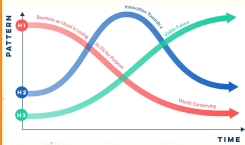


Step by Step

How do we translate regeneration principles into **a budget regenerative design template?**

CARDINAL PRINCIPLES: LONG TERM COMMITMENT

Embracing time



Do they create conditions that favor life?
Does it establish a regenerative pattern?

Does this activity attempt to cover basic operational needs during the transition?

Are there any opportunities to replace them with activities that lead to deep systemic transformation?

To which horizon it corresponds?

Embracing the land

Does it embrace the territory?
Is it real?

MUTABLE PRINCIPLES

From Personal to Universal
Is it relevant to humanity?

Amplifying our voice:
Does it amplify FAI's voice?

Broadening the territory:
Does it amplify the territory of action?

Navigating complexity through embodied innovation:
Does it allow to think, feel, stop, look and continue with your dreams following the golden thread?

Healthy Relationships:
Does it foster healthy bonds in your life and in nature?



Step by Step

Create a **Regenerative Planification** template to improve our main projects

Regenerative Design Patterns												
Cardinal principles: Long term Commitment				Variable principles								
1. Embracing Time: Theory of the 3 Horizons (IFF)				2. Embracing the land	3. From personal to Universal	4. Amplifying our voice:	5. Broadening the Territory:	6. Navigating complexity through embodied innovation:	7. Healthy Relationships:			
3 Horizons Questions				Questions		Variable Principle questions						
Our Projects	Do they create conditions that favor life? Does it establish a regenerative pattern?	Does this activity attempt to cover basic operational needs during the transition?	Are there opportunities to generate or replace with activities that lead to deep systemic transformation?	Horizon (IFF)	Does it embrace the territory? It is real?	Is it relevant to humanity?	Does it amplify the voice?	Does it amplify the territory of action?	Does it allow to think, feel, stop, look and continue with your dreams following the golden thread?	Does it foster healthy bonding in your life and in nature?	Improvements to apply / Opportunity	Improved activity according to regenerative design patterns/regenerative patterns
Project 1	Yes	No	Yes	H3	Yes	Yes	It can be improved	Yes	It can be improved	It can be improved	Improvements	Project 1 Improved
Project 2	No	No	Yes	H2-	No	It can be improved	Yes	It can be improved	It can be improved	It can be improved	Improvements	Project 2 Improved
Project 3	Yes	Yes	Yes	H1	It can be improved	Yes	Yes	Yes	It can be improved	Yes	Improvements	Project 3 Improved





Step by Step

Lets see an example! Education

VERB DOMAINS EARTH DOMAINS	FAI's Projects	Do they create conditions that favor life? Does it establish a regenerative pattern?	Does this activity attempt to cover basic operational needs during the transition?	Are there any opportunities to generate or replace them with activities that lead to deep systemic transformation?	Horizon (IFF)	Embracing the land: Does it embrace the territory? It is real?	From personal to Universal: Is it relevant to humanity?	Amplifying our voice: Does it amplify the voice?	Broadening the Territory: Does it amplify the territory of action?	Navigating complexity through embodied innovation: Does it allow to think, feel, stop, look and continue with your dreams following the golden thread?	Healthy Relationships: Does it foster healthy bonding in your life and in nature?
Educate	FAI va a las escuelas / Las escuelas vienen a FAI: Visitas de 16 escuelas de seguir probando el Programa de Educación basada en la Naturaleza con las escuelas	YES	NO	YES	H2+	It can be improved	It can be improved	It can be improved	It can be improved	It can be improved	It can be improved

Improvements to apply / Opportunity

. Embracing the land:
 Improve and use the information we already have from 12 local schools
 Expand the number of schools (there are 40 schools in total)
 It is also possible to grow in the number of grades in the schools that we are already in.

. From personal to Universal: How do we grow?
 Staff: Today is for 5th and 6th graders. We can work with more range of ages

Local:
 Focus on Andresito.

Regional:
 Hold workshops with teachers from different places so that they can get to know each other. Let teachers know each other among teachers, musicians, researchers, etc.

Global:
 Identify what we can do.

. Amplifying our voice:
 Share what we do in other areas: 2 Universities, 2 secondary schools, 2 primary schools and 2 formations.

. Broadening the Territory:
 Should we cover 100% of the schools in the territory?

. Navigating complexity through embodied innovation:
 Teach methodologies such as art therapy & apusama.

. Healthy Relationships
 How does the foundation dialogue with education?

Improved activity according to regenerative design patterns regenerative patterns

NEW NAME: Nature-based Education Program with schools

- 1- Identify how we want to grow: in number of grades, in number of schools, in number of facilitators.
- 2- Identify the topics that you want to deal with in the coming years.
- 3- Training of Trainers:
 Hold a workshop with teachers and new facilitators.
- 4- Make visits
 A - To schools
 B- They come to FAI
 C- We go back to school to see what they learned.
- 5- Arrange meeting of teachers and children.
- 6- FAIteca and Book Editions

Important: We do not have an internal resource to carry it out.

5. NEXT STEPS:

Sharing our 3 year Budget.

How does a **regenerative budget** that can handle complexity and uncertainty look like?

*Don't worry!
It still looks like an excel sheet :-)*



As in the forest, there are many opportunities for life to arise.
We are discovering the future step by step.
Everything is moving.

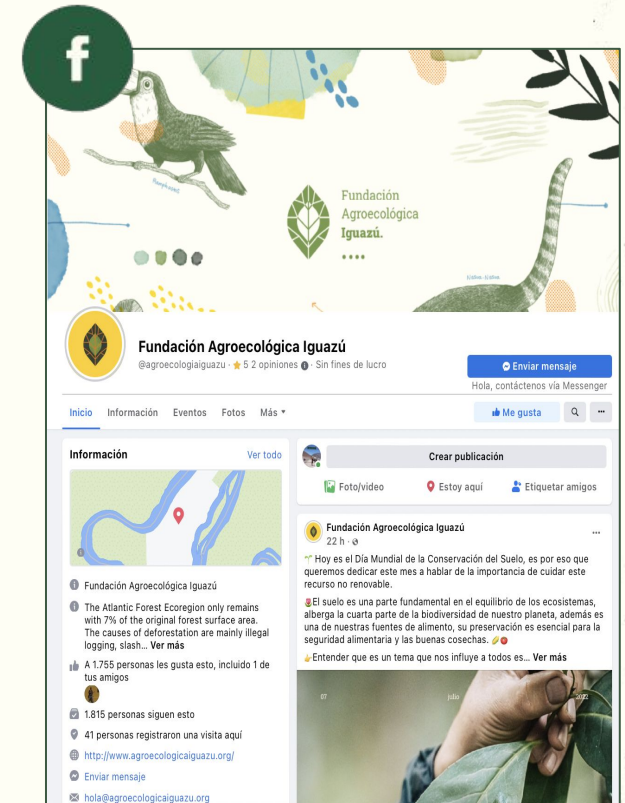
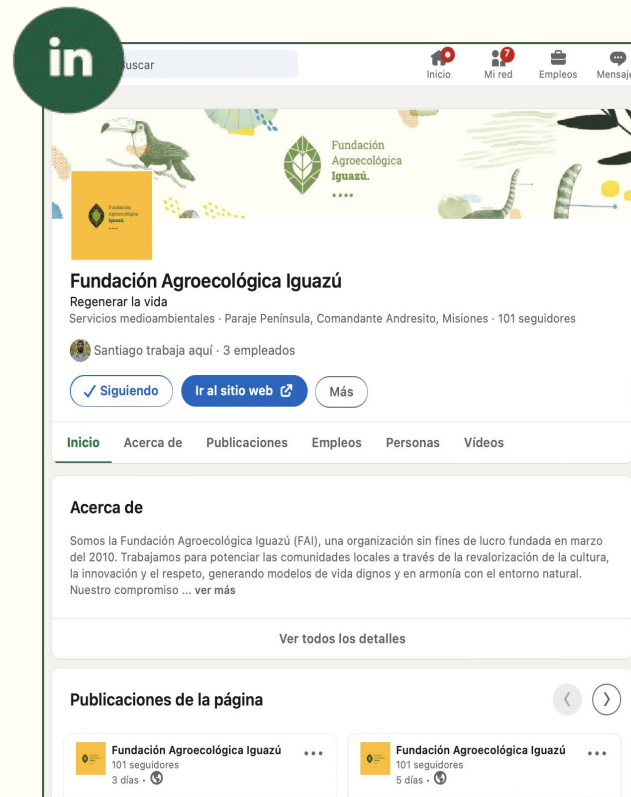
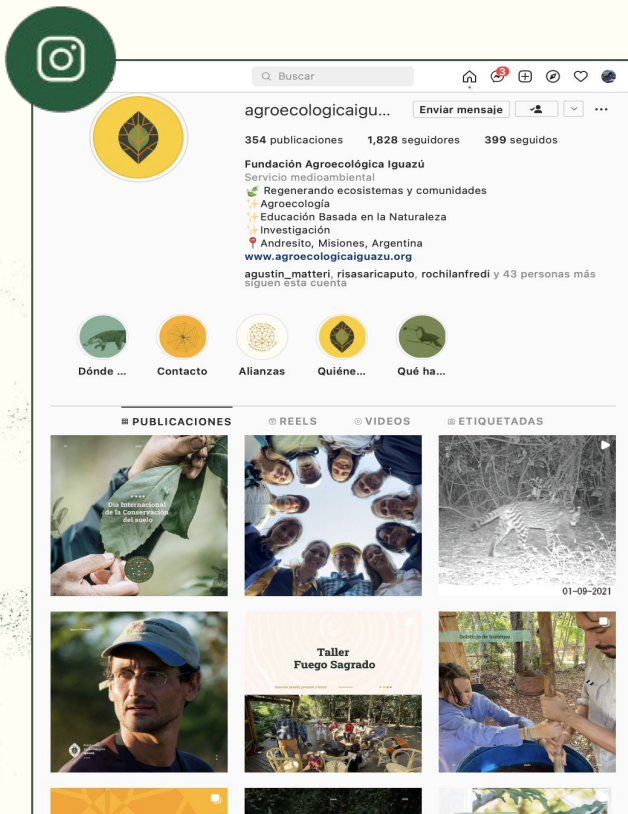
We welcome all the questions you have
as we are opened to explore possibilities of doing things together.



Fundación
Agroecológica
Iguazú.



Follow Us for **FAI**bulous news!



For more, visit: www.agroecologicaiguazu.org

Trabajamos para
#Regenerar la Vida



Trabajamos para
#Regenerar la Vida

www.agroecologicaiguazu.org

Thank you so much!

If you have any further questions,
feel free to contact us!

florencia.casiraghi@agroecologicaiguazu.org

alex.pryor@guayaki.com



Alex Pryor & Flor Casiraghi
President & Executive Director





Fundación
Agroecológica
Iguazú.



IMPACT Report 2022

Results