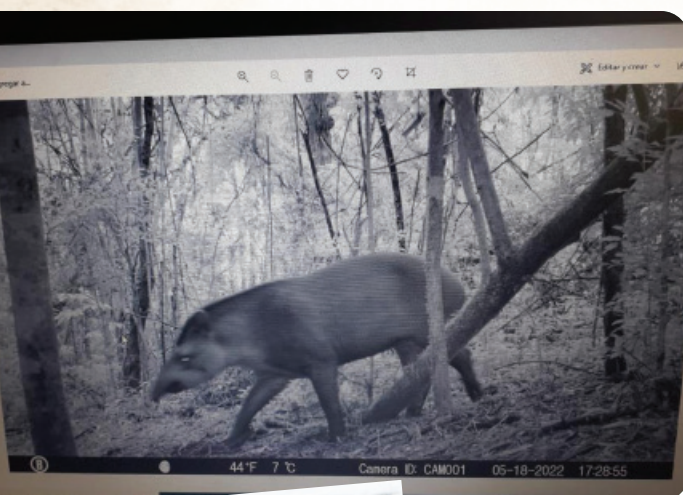




Internal monitoring of wildlife



We monitor the fauna inside the reserve to check on how they coexist with the shade grown yerba mate production and to contribute to and disseminate knowledge about Atlantic Rainforest fauna.



Tapir with its calf.

Our purpose

- Validate that the wildlife can coexist with our sun grown yerba mate system. ●●
- Contribute to local, regional and international scientific research on the wildlife of the Atlantic Rainforest region. ●
- Publicize the research findings on Atlantic Rainforest fauna. ●●



Camera trap placement.

Our actions

We started an internal line of research to obtain valuable information about the fauna that inhabit and move about the shade grown yerba mate plantations and native forests in the reserve. Based on this information, we have written regular reports keeping track of the different species populations, their habits and the impact of human activity in the rainforest. This allows us to verify the activity and movements of animals located in the green corridor of the Andresito Peninsula.

In addition, we created an inventory of mesofauna species present in the reserves and compiled data for the purpose of observing both spatial and temporal changes in their numbers and distribution.



Yaguareté "Guayaki" record at RAIz 1.

We do this all as part of a network, collaborating mainly with Proyecto Yaguareté through information sharing and participation in activities with them.

Our edge

Technology

We use camera trap technology, which consists of installing camera traps to record images of fauna. This allows us to use fewer resources and is environmentally friendly, generating less impact.

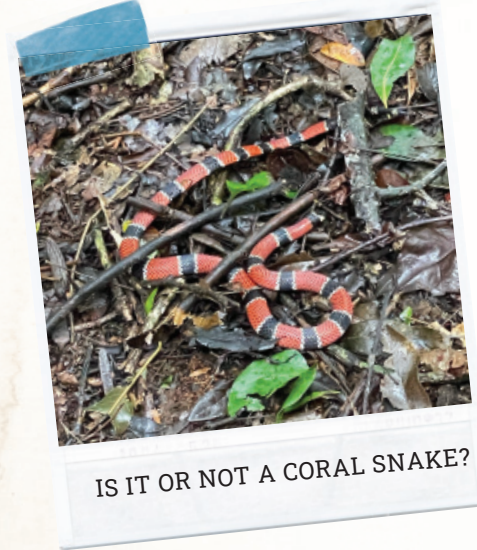
We observe with purpose

We are always vigilant of the impact of our activity on the different species that inhabit the jungle. We collect data that teach us about our relationship and impact on the fauna in this biological corridor.

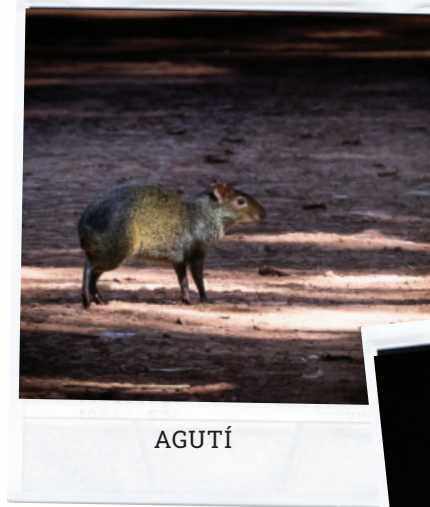
We focus our attention on large and medium-sized mammals, which are bioindicators of the ecosystem in that they are highly susceptible to forest degradation and poaching.



Tapir in the shade grown yerba mate plantation



IS IT OR NOT A CORAL SNAKE?



AGUTÍ



BROWN DEER REGISTERED IN THE SHADE GROWN YERBA MATE PLANTATION



OCELOT

Our data

Reports 2018-2021

Records of 2 Yaguareté (Guayaki) in FAI's reserve

Photo library

Map of wildlife hit by vehicles